

# Feline Corona Virus Antigen Rapid Test (FCoV Ag)

Catalog No.: JCA106C

## ◇ INTENDED USE

The Feline Corona Virus Antigen Rapid Test is a test cassette to detect the presence of Feline Corona virus antigen (FCoV Ag) in cat's pleural fluid, ascitic fluid or feces specimen, to provide a reference for diagnosis of Feline Infectious Peritonitis (FIP) infection.

Assay Time: 5-10 minutes

Specimen: Pleural fluid, ascitic fluid or feces.

## ◇ PRINCIPLE

The FCoV Ag Rapid Test is based on sandwich lateral flow immunochromatographic assay.

## ◇ REAGENTS AND MATERIALS

- Test devices
- Disposable capillary droppers
- Assay buffers
- Products Manual

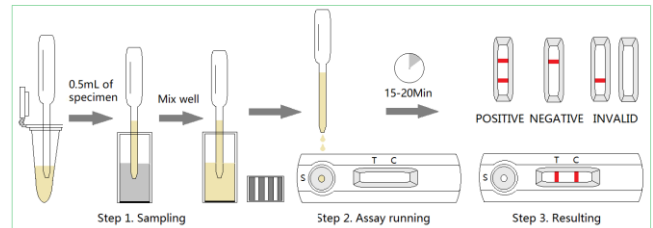
## ◇ STORAGE AND STABILITY

The kit can be stored at room temperature (4-30°C). The test kit is stable through the expiration date (24 months) marked on the package label. DO NOT FREEZE. Do not store the test kit in direct sunlight.

## ◇ TEST PROCEDURE

- Allow all materials, including specimen and test device, recover to 15-25°C before running the assay.
- Take out the test device from the foil pouch and place it horizontally.
- Collect the pleural fluid or ascitic fluid from the patient cat, do filtration and centrifuge to get rid of the impurities. Use the clear fluid in the assay. If it is pleural fluid or ascitic fluid, using a dropper to place 1 drop (approx. 40  $\mu$  L) of the prepared fluid specimen into the sample hole "S" of the test device. Then drop 2 drops (approx. 80  $\mu$  L) of the assay buffer into the sample hole immediately. *NOTE: If fluid specimen is enough, place around 0.5mL of fluid specimen into the assay buffer and mix well for use directly.*
- If it is feces specimen, collecting a tip of cat's feces with the swab stick. Insert the swab into the provide assay buffer tube for dilution. Shake to make it sufficiently resolved and use the mixture in the assay.
- Interpret the result in 15-20 minutes. Result after 20

minutes is considered as invalid.



## ◇ INTERPRETATION OF RESULTS

- Positive (+): The presence of both "C" line and zone "T" line, no matter T line is clear or vague.
- Negative (-): Only clear C line appear. No T line.
- Invalid: No colored line appears in C zone. No matter if T line appears.

## ◇ PRECAUTIONS

- All reagents must be at room temperature before running the assay.
- Do not remove test cassette from its pouch until immediately before use.
- Do not use the test beyond its expiration date.
- The components in this kit have been quality control tested as standard batch unit. Do not mix components from different lot numbers.
- All specimens are of potential infection. It must be strictly treated according to the rules and regulations by local states.

## ◇ LIMITATION

The Feline Corona Virus Antigen Rapid Test is for in vitro veterinary diagnosis use only. All result should be considered with other clinical information available with veterinarian. It is suggested to apply a further confirmative method such as RT-PCR when positive result was observed.



J&G Biotech Ltd (Reg. No.: 08419172)

326 Cleveland Road, London, England E18 2AN, UK